

碳化硅石墨坩埚

Silicon Carbide Graphite Crucible



JinOunCru
金顿坩埚

诸城市金顿耐火材料科技有限公司

Zhucheng Jindun Refractory Technology Co.,Ltd.



合作 Cooperation

» 目录 Content

公司简介.....	01
Company Profile	
产品特点.....	03
Product Features	
常规型坩埚.....	05
Silicon Carbide Graphite Crucible	
带嘴坩埚	09
Spouted Crucible	
感应炉直体坩埚.....	10
Inductor Crucible	
椭圆型坩埚	11
U-Shaped Crucible (Elliptical Crucible)	
石墨产品.....	13
Graphite Products	

公司简介

COMPANY PROFILE

诸城市金顿耐火材料科技有限公司，是碳化硅石墨坩埚、连续铸钢用铝碳、铝锆碳耐火材料的专业生产企业。引进国内外先进冷等静压技术生产出碳化硅石墨坩埚，此坩埚具有寿命长，导热快等优点。使用寿命是传统坩埚的 3-5 倍！

企业技术力量雄厚，拥有冶金、材料科学、机械等多学科的技术队伍，配备先进的生产技术和检测手段，ISO9001:2015 国际质量管理体系和德国莱茵 TUV 认证体系有效覆盖管理和生产，具有很强的新品研发能力。

其中公司旗下的 "金顿" 牌碳化硅石墨坩埚在坩埚生产和开发领域具有多年的丰富经验，是有色金属业内公认的优良坩埚生产供应商。

金顿坩埚及铸造材料旨在为压铸、铸造、化工和有色金属熔炼厂提供熔炼解决方案，所涵盖的熔炼应用领域包括锌、锌合金、铝、铝合金、铜、铜合金、中间合金、母合金、金、银等贵金属的熔炼和铸造。

企业完善的售后服务体系保证了市场的开发，与用户建立良好共赢的合作关系。在服务理念上，企业确立为客户解决问题，为客户创造价值的信念，售后服务流动队与客户长期频繁交流与沟通，深受客户的欢迎。

诸城市金顿耐火材料科技有限公司愿以“勤奋工作、务实创新”的精神和“具有相当竞争力的产品”与国内外企业建立合作共赢的伙伴关系。

Zhucheng Jindun Refractory Technology Co.,Ltd. specializes in researching, designing and manufacturing all kinds of crucibles for smelting nonferrous metals. Adopting the advanced cold isostatic pressing technology to manufacture the high quality silicon carbide graphite crucible, which has advantages of long lifetime, fast heating conduction. Service life is 3-5 times than the traditional crucibles.

Our technical team members are with background in metallurgy, machinery etc which have strong ability on new product development. Also, our company was controlled by ISO9001:2015 international quality system and verified by TUV, and equipped with advanced testing machine and methods.

“JINDUN” brand silicon carbide graphite crucible has many years of rich experience in the field of crucible production and development, and is recognized as an excellent crucible production supplier in the non-ferrous metal industry.

JINDUN crucibles and casting materials are designed to provide melting solutions for die-casting, casting, chemical and non-ferrous metal smelting plants. The melting applications include smelting and casting of non-ferrous metals and precious metals such as zinc, zinc alloy, aluminum, aluminum alloy, copper, copper alloy, master alloy, gold and silver...etc

Complete after-sale service to help customers to solve problem helps us always in market with our clients.

JINDUN is willing to establish long term business relationship with clients worldwide with offering high quality products and service .



Jindun Crucible Melt Your Troubles

金顿坩埚 熔你所难



产品优势

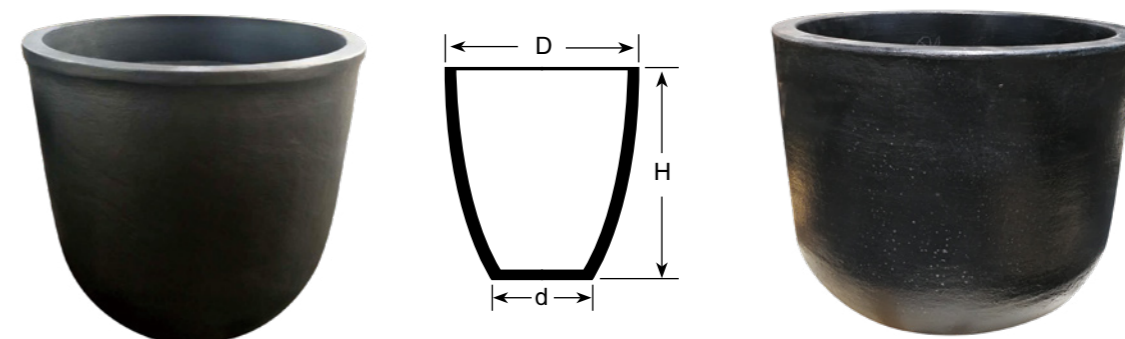
- (1) 导热快：因为碳化硅石墨坩埚使用了热传导性较高的石墨等原材料，缩短了熔解时间，节省能源；另外还使用了高导热材料，组织致密，显气孔率低，导热速度快。
- (2) 寿命长：与普通粘土石墨坩埚相比，寿命可延长 3-5 倍。
- (3) 耐热冲击性强：石墨坩埚耐热冲击机能强，对于急冷急热，不易破裂；所能承受的热冲击强度极高，所以任何工艺处理都可以放心进行。
- (4) 高耐热性：耐温度高，可耐高温；
- (5) 抗浸蚀性：对抗熔汤的腐蚀性；平均细密的基体设计，延缓了坩埚的受腐蚀度。
- (6) 抗粘连性：由于石墨具有不易与熔汤粘连的特性，所以熔汤的浸透和附粘少；
- (7) 金属污染非常少：材料成分的严格控制，保证了溶解时石墨坩埚对金属没有污染；材料设计时完全考虑了与被熔炼金属的关系和工艺特点，几乎或完全不带入有害杂质。
- (8) 节能环保：导热快可以大量节省燃料，减少废气污染。
- (9) 强度大：选用优质材料，高压压制，结合公道，高温强度高，产品造型科学，承压能力高。抗裂机能佳。所以它保持着自然石墨原有的各种理化特性。
- (10) 抗氧化性：独特的抗氧化设计，并使用高纯原料，保护石墨；高抗氧化性能是普通石墨坩埚的 5-10 倍。
- (11) 粘渣少：内壁挂渣量少，大大减少阻热作用和胀裂坩埚的可能性，始终保持容量最大化。
- (12) 交期短

Advantages

- (1) Higher thermal conduction: Silicon carbide graphite crucible uses high thermal conductivity raw materials such as graphite, which shortens melting time and saves energy; in addition, higher thermal conductivity materials are used, with dense structure, low apparent porosity and higher thermal conductivity.
- (2) Long life: Life is 3-5 times longer than the ordinary clay graphite crucible.
- (3) Excellent thermal shock resistance: Silicon carbide graphite crucible has strong heat-resistant impact function, and it is not easy to break under sharply heating and cooling; The heat shock strength is high, so any process can be carried out safely.
- (4) Higher temperature resistance: The using temperature range 400-1600°C .
- (5) Corrosion resistance: Advanced materials and glaze recipes, effectively resistance to corrosion.
- (6) Anti adhesion: Because graphite has the characteristics of not easy to adhere to the molten metal, the penetration and adhesion of the molten metal is less;
- (7) Less metal pollution: Because of the choice of high purity inorganic material, little or no harmful impurities into products in the metal melting process.
- (8) Energy saving and environment-friendly : Higher heat conduction can save a lot of fuel and reduce pollution of waste gas.
- (9) High strength: High quality materials are selected, high pressure isostatic pressing, fair combination, high strength, scientific product modeling and high pressure bearing capacity, good crack resistance. So it maintains the original physical and chemical properties of natural graphite.
- (10) Antioxidant: Unique anti-oxidation design, and use high-purity raw materials to protect graphite; high oxidation resistance is 5-10 times higher than the ordinary graphite crucible.
- (11) Less slag sticking: less slag hanging on the inner wall, greatly reducing the possibility of thermal resistance and expanding and cracking , and keeping the capacity maximized.
- (12) Fast delivery

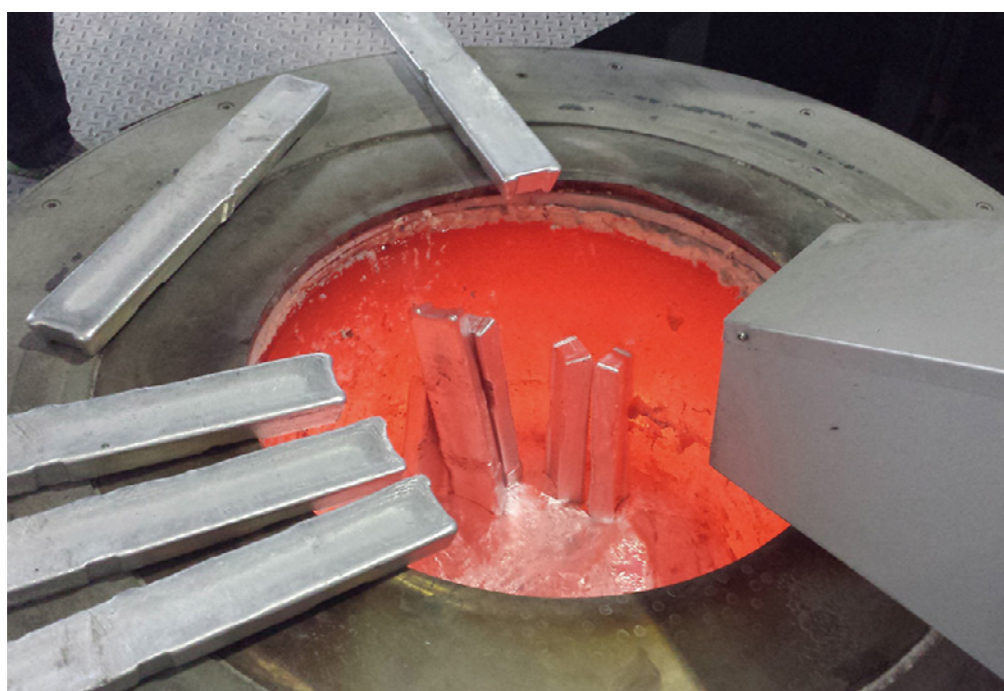


■ 常规型坩埚 Silicon Carbide Graphite Crucible



尺寸 Dimension:

Model	D(mm)	H(mm)	d(mm)
8	135	120	135
10	130	170	128
11	198	130	116
34	200	255	130
35	225	200	160
110	330	390	185
150	395	420	215
200	400	505	215
210	450	500	210
293	510	520	260
300	451	495	260
310	454	500	270
315	460	580	329
320	460	590	270
350	462	620	270
353	600	450	280
365	530	530	280
370	530	570	280
400	501	600	268
410	475	630	270
420	515	673	330
451	515	610	280
460	585	600	320
462	580	620	310
463	580	620	320
480	508	670	268



Model	D(mm)	H(mm)	d(mm)
490	530	600	325
500	520	700	268
501	520	740	268
501X	526	763	270
505	530	780	268
510	540	650	325
511	550	660	325
530	550	810	255
605	540	740	280
601	550	810	375
610	550	790	375
620	550	810	280
700	605	505	290
765	615	635	290
765H	620	635	290
780	596	620	260
801	600	680	260
802	610	700	330
802-b	610	700	330
803	620	800	330
803-b	617	800	330
810-b	622	865	330
810	622	865	330
810X	620	860	330
820	715	530	300
835	635	552	302
840	650	650	302
841	650	650	300
850	800	550	420
910	710	600	290
911	710	600	290
1000	710	690	285
1020	711	660	300
1030	715	680	300
1050	725	718	300
1100	658	820	280
1100-B	658	820	280
1200	730	740	300

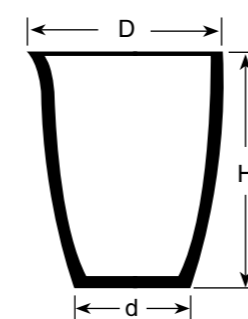
Model	D(mm)	H(mm)	d(mm)
1220	720	760	300
1280	724	800	330
1300	725	820	330
1480	775	635	360
1500	748	905	295
1500-B-40	725	905	310
1540	766	748	403
1550	780	750	410
1551(H)	780	750	360
1650	775	800	390
1651	775	800	320
1700	875	685	350
1701	880	680	340
1800	780	900	390
1800H	795	895	320
1800X	785	900	390
1800XB	795	895	390
1900	871	750	340
1901	880	755	340
1950	826	750	350
2250	880	880	340
2251	885	875	340
2300	870	1000	355
2500	901	1133	350
2700	911	1165	350
3300	970	880	735
5000 (830)	1038	830	500
5000 (850)	1038	850	500
5000 (890)	1039	890	500
5000 (900)	1040	900	500
5000 (1000)	1040	1000	500
5000 (1050)	1035	1050	500
5000 (1200)	1042	1200	500
5000 (1320)	1050	1320	500
5150(1320)	1050	1320	500
5430	1270	900	1100



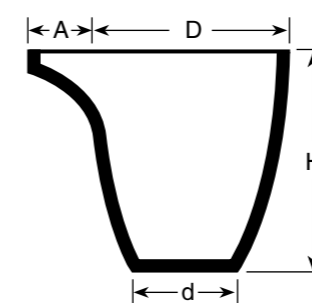
带嘴坩埚 Spouted Crucible



尺寸 Dimension:



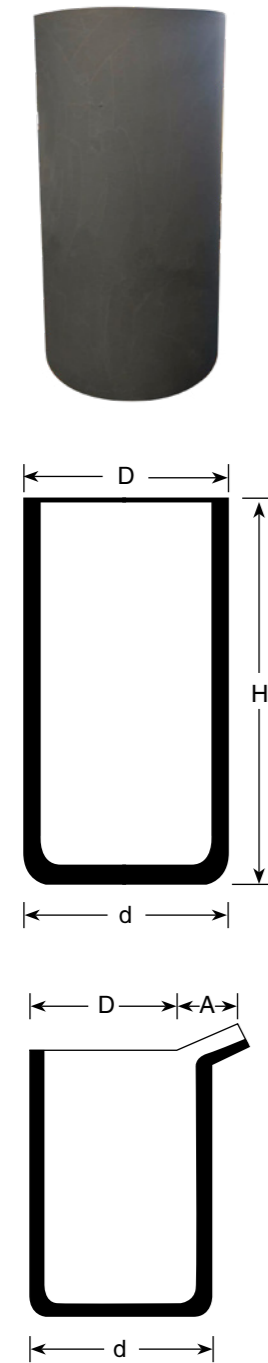
Model	D(mm)	H(mm)	d(mm)
A8 (Z8)	170	172	103
A40 (Z40)	283	325	180
A60	305	345	200
A80	325	375	215



Model	D(mm)	H(mm)	d(mm)	A(mm)
Z500	525	600	320	70.7
Z803	615	800	355	131.8
Z1550	785	750	360	191.1
Z1800	780	900	325	265
Z1920	700	1100	665	282.2
Z2250	875	875	348	265
Z2300	880	1000	355	345
Z2500	880	1100	400	450
Z2700-b	880	1170	330	379

■ 感应炉直体坩埚 Inductor Crucible

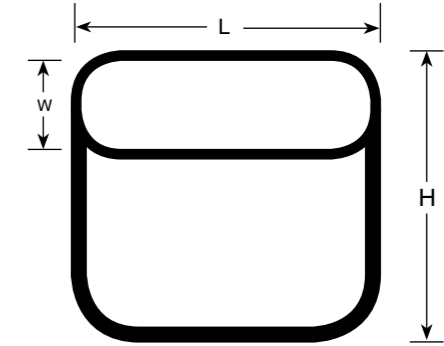
尺寸 Dimension:



Model	D(mm)	H(mm)	d(mm)
IND10	130	170	128
IND60	270	335	260
IND80	290	340	280
IND120	250	590	250
IND260	300	610	295
IND295	400	570	400
IND300	400	600	400
IND310	430	570	420
IND320	390	580	200
IND390	390	750	390
IND500	480	600	470
IND540	420	810	410
IND600	550	800	540
IND570	480	805	408
IND610	450	945	450
IND690	620	470	620
IND900	510	955	483
IND905	630	640	620
IND1050	510	1100	480
IND1200	610	1000	590
IND1250	620	850	620
IND1450	725	715	710
IND1700	620	1200	610
IND1700-B	610	1200	600
IND1700-C	580	1200	570
IND1800	660	1100	650
IND1900	796.5	1000	945
IND2000	800	1130	770
IND2200	825	1130	825
IND2500	600	1200	590
IND3000	700	1400	690
IND3001	930	1150	900
IND3002	900	1150	860
IND3190	805	1320	800
IND3200	820	1400	820
IND3300	810	1400	805
IND3501	825	1630	825
IND3500	825	1630	825
IND6300	935	1600	920
IND6500	950	2025	880
IND7910	933	2015	693

Model	D(mm)	H(mm)	d(mm)	A(mm)
IND2700	740	1230	730	379

■ 椭圆型坩埚 U-shaped Crucible (Elliptical Crucible)



尺寸 Dimension:

Model	length(L)mm	H(mm)	Width (W) mm
Y700	785	520	505
U950	837	540	547
U1160	950	520	610
U1200	838	600	548
U1560	1085	487	585
U1580	848	785	557
U1900	850	920	560
Y1820	975	630	740
U2000	1260	515	630
U2240	1271	581	671
U2570	1276	650	676
U2690	1058	770	833
U2761	1279	690	679
U3160	1063	880	838
U3800	1070	1035	845
U4750	1080	1255	855

石墨转子

Graphite Rotor and Shaft



-Graphite Rotor 转子

产品描述：

石墨转子密度一般默认为 $1.7\text{g}/\text{cm}^3$ 。我们的石墨转子经过抗氧化处理后，密度可以达到 $1.75\text{-}1.78\text{g}/\text{cm}^3$ ，使其寿命更长。

制作一般需要客户提供图纸。

应用：

输入氩气或氮气到 750°C 的铝液中，转速可高达 $400\text{r}/\text{min}$ ，强烈搅动铝液，使铝液熔入氩或氮中，使许多小气泡分散在液态金属中，同时旋转转子也有助于氢气在铝熔液扩散，使气泡在熔液中通过气体分压和表面吸附原理接触，吸收熔液中的氧化渣，并随着气泡的上升而被带出熔液表面，使熔液得到净化。

优势：

- 1 无杂质，无污染。
- 2 耐高温，抗氧化能力强。
- 3 优良的自润滑性能
- 4 优异的耐化学腐蚀性
- 5 导热系数高，热稳定性好
- 6 足够的机械强度和抗冲击性

Product Description

Density is generally default to $1.7\text{g}/\text{cm}^3$, our graphite rotor after antioxidant treatment density can be achieved $1.75\text{-}1.78\text{g}/\text{cm}^3$, making it long life.

Producing needs drawing provided by customers generally.

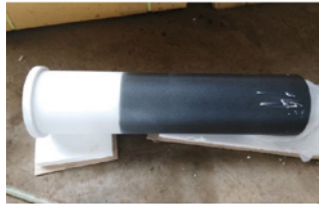
Application

The main input for the aluminum solution argon or nitrogen, and rotate 750 degrees below and strongly agitated molten aluminum, making aluminum melt into the argon or nitrogen to break up the formation of many small bubbles dispersed in the liquid metal, while rotating the rotor also contributed to hydrogen within the aluminum melt inclusions spread, making contact with the air bubbles in the melt by gas partial pressure and surface adsorption principle, to absorb the melt hydrogen adsorption oxide slag, and with the bubbles rise and was taken out of the melt surface, the melt to be purified.

Advantage:

1. Without contamination of impurities
2. High resistance to high temperature, lower down oxidation speed.
3. Excellent self-lubrication
4. Remarkable chemical corrosion resistance
5. High thermal conductivity and good thermal stability
6. Adequate mechanical strength and shock resistance

石墨产品 Graphite Products



-SiC Heating tube
(Heating element
protection tube) 加热管



-Thermocouple protection
tube 热电偶保护管



-Riser 升液管



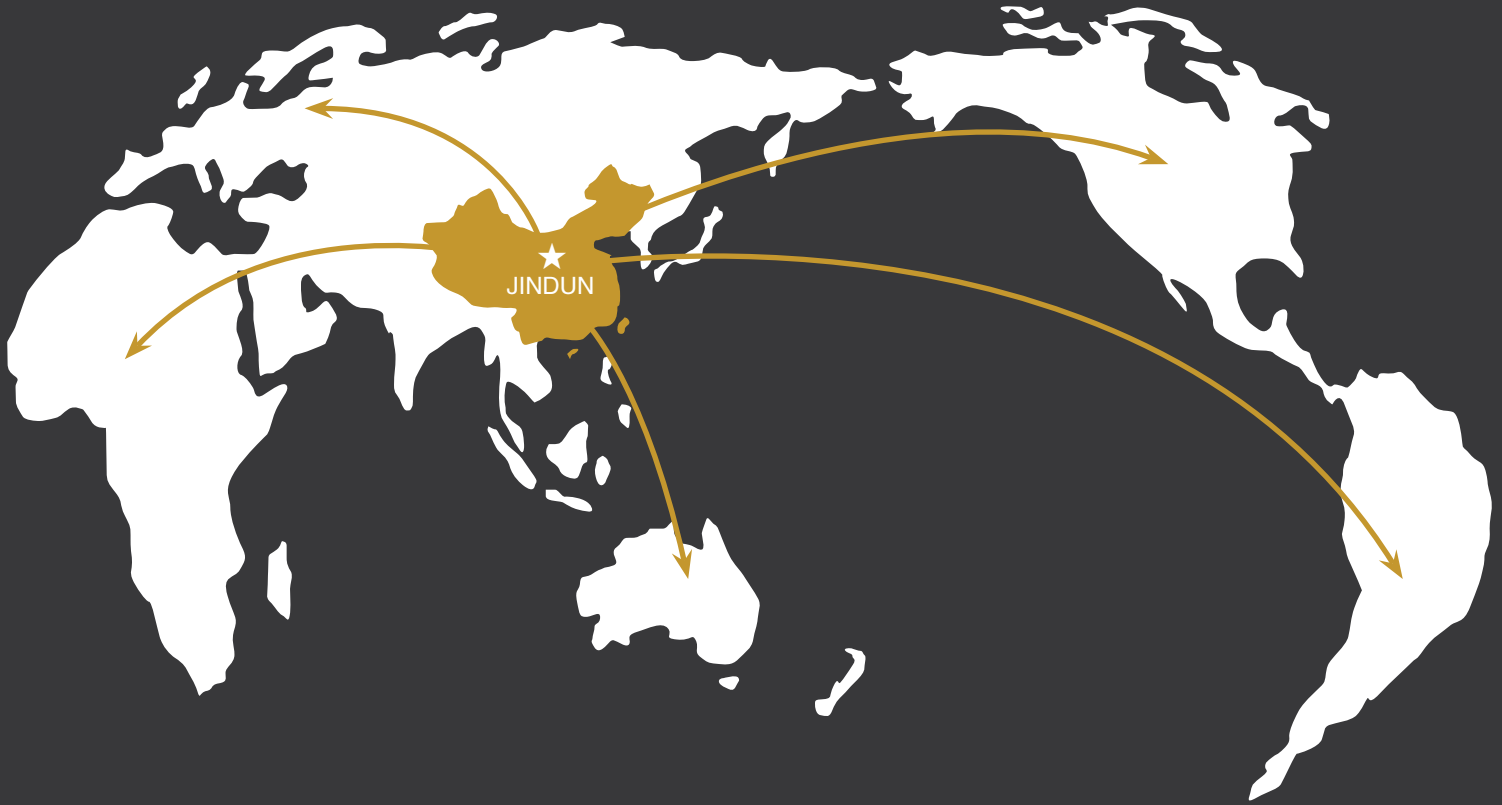
-Crucible Cover 坩埚盖

型号 Model	外直径 D	高度 H
1	145	840
2	240	1030
2-1	250	1030
3	150	850
3-2	130	850
4	220	950
5	240	950
6	210	850
7	200	850
8	240	1000
9	240	850
10	140*200	1360
11	120	858
12	220	1000
13	220	850
14	150	850
15	370	1000
16	260	950
17	330	1250
18	370	1300

型号 Model	外直径 D	高度 H
Riser 升液管	188	750

型号 Model	外直径 D	高度 H
511	540	140
1000	705	150
1100	650	150
1500	740	150
1800	785	150





GLOBAL SUPPLIER OF CRUCIBLE

国内热线

诸城市金顿耐火材料科技有限公司
地址：山东省诸城市枳沟镇乔庄工业园区
电话：+86 15689830722
邮箱：jindenaihuo@163.com
网址：www.jinduncrucible.com

Overseas Hotline

Zhucheng Jindun Refractory Technology Co.,Ltd.
Add: ZhiGou town Zhucheng Weifang city Shandong,China
Tel: +86 15753661791
Email: info@jinduncrucible.com
Web: www.jdrefractories.com
<https://zcjinde.en.alibaba.com>

